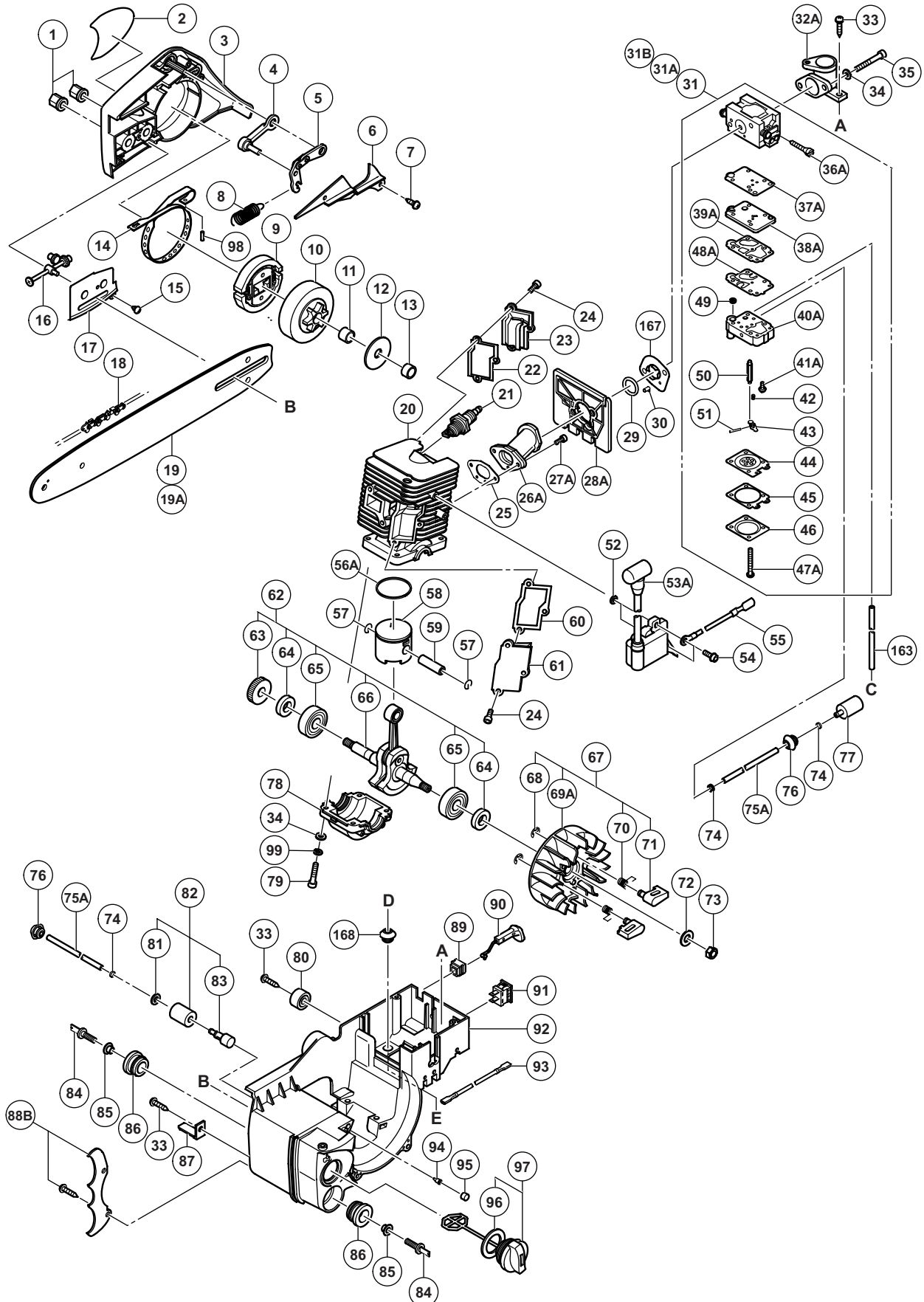
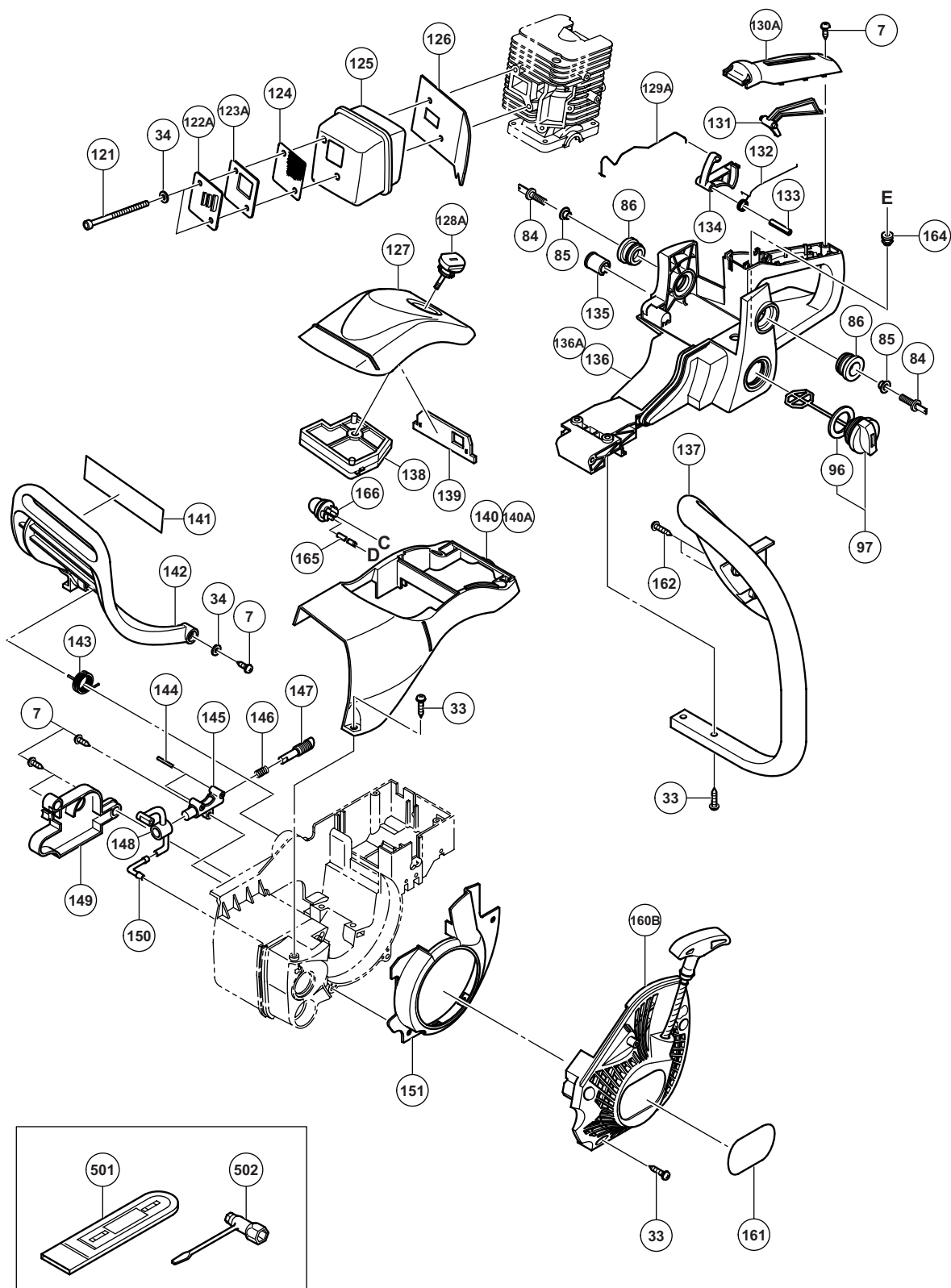


ENGINE TOOL PARTS LIST

ENGINE CHAIN SAW Model CS 33EB

2011-12-23
(E2)





PARTS

CS 33EB

ITEM NO.	CODE NO.	DESCRIPTION	NO. USED	REMARKS
1	668-5416	CHAIN BAR CLAMP NUT	2	
2		NAME PLATE	1	
* 3	668-5406	SIDE COVER SUB	1	
* 3	668-5422	SIDE COVER SUB (GREEN)	1	FOR USA
4	668-5387	BRAKE SUPPORT	1	
5	668-5388	BRAKE LINK	1	
6	668-5392	BRAKE LINK COVER	1	
7	305-812	TAPPING SCREW (W/FLANGE) D4 X 16 (BLACK)	7	
8	668-5389	BRAKE SPRING	1	
9	668-5362	CLUTCH	1	
10	668-5403	CLUTCH HOUSING	1	
11	668-5361	NEEDLE BEARING (D)	1	
12	668-5414	CLUTCH WASHER	1	
13	668-5360	CRANK SHAFT COLLAR	1	
14	668-5390	BRAKE BAND	1	
15	668-5415	TAPPING SCREW D3 X 8	2	
16	668-5393	CHAIN PULLER	1	
17	668-5394	GUIDE PLATE	1	
* 18	668-5170	SAW CHAIN (3/8 X 12") 91VG-45E	1	
* 18	668-5171	SAW CHAIN (3/8 X 14") 91VG-52E	1	
* 18	669-6330	SAW CHAIN (3/8 X 16") 91VG-57E	1	
* 19	668-5258	BAR 12 INCH	1	
* 19	668-5260	BAR 14 INCH	1	
* 19	668-5262	BAR 16 INCH	1	
* 19A	669-6990	CHAIN BAR 12 INCH 3/8 SPROCKET PRC	1	
* 19A	669-6991	CHAIN BAR 14 INCH 3/8 SPROCKET PRC	1	
* 19A	669-6992	CHAIN BAR 16 INCH 3/8 SPROCKET PRC	1	
* 20	668-5405	CYLINDER (B)	1	
* 20	668-5404	CYLINDER (A)	1	FOR EUROPE, USA, CAN (SINCE 8. 2009 FOR FRG)
* 21	668-5086	SPARK PLUG BPMR6A	1	
* 21	668-5085	SPARK PLUG BPM6A	1	EXCEPT FOR EUROPE, RUS, AUS, CHN, SAF, MEX, PAN, VIE
* 22	668-5317	COVER PACKING (B)	1	FOR EUROPE, USA, CAN (SINCE 8. 2009 FOR FRG)
* 23	668-5315	SCAVENGING COVER (B)	1	FOR EUROPE, USA, CAN (SINCE 8. 2009 FOR FRG)
* 24	669-6315	SEAL LOCK HEX. SOCKET HD. BOLT M4 X 8	6	FOR EUROPE, USA, CAN (SINCE 8. 2009 FOR FRG)
25	668-5318	INTAKE PACKING	1	
26A	669-8897	INTAKE (A)	1	
27A	669-6860	SEAL LOCK HEX. SOCKET HD. BOLT M4 X 10	2	
28A	669-8898	CARBURETOR INSULATOR (A)	1	
29	669-6316	O-RING	1	
30	668-5321	PULSE GUIDE	1	
* 31	668-5435	CARBURETOR ASS'Y (B) WLB-1A	1	INCLUD. 36-51
* 31A	668-5437	CARBURETOR (C) WLB-3	1	INCLUD. 36-51 FOR EUROPE, USA, CAN, RUS, AUS
* 31B	669-8683	CARBURETOR ASS'Y (E) WLB-5	1	INCLUD. 37-39, 41-51 SINCE 5. 2011 FOR EUROPE, USA, CAN
32A	669-6843	CLEANER SUPPORT	1	
33	302-089	TAPPING SCREW (W/FLANGE) D5 X 20 (BLACK)	12	
34	668-5408	WASHER 5	9	
35	669-6317	HEX. SOCKET HD. BOLT M5 X 45	2	
36A	669-6318	IDLE ADJUSTING SCREW	1	
37A	669-6319	PASSAGE GASKET	1	
38A	669-6320	PASSAGE PLATE	1	

PARTS

CS 33EB

ITEM NO.	CODE NO.	DESCRIPTION	NO. USED	REMARKS
39A	668-4692	PUMP GASKET	1	
40A	669-6322	PUMP BODY	1	
41A	669-1305	HINGE PIN SET SCREW	1	
42	669-6323	METERING LEVER SPRING	1	
43	668-5217	CONTROL LEVER	1	
44	668-4690	METERING DIAPHRAGM	1	
45	668-5220	DIAPHRAGM PACKING-METERING	1	
46	668-5222	DIAPHRAGM COVER-METERING	1	
47A	668-4699	SET SCREW	4	
48A	668-4693	PUMP DIAPHRAGM	1	
49	668-4700	INLET SCREEN	1	
50	668-5215	NEEDLE VALVE	1	
51	668-5219	HINGE PIN	1	
52	668-4600	WASHER T1.6	2	
53A	668-5333	IGNITION COIL (FL33F) (CAP-6699187)	1	(CAP METAL-6699186)
54	669-6326	HEX. SOCKET HD. BOLT (W/FLANGE) M4 X 18	2	
55	668-5338	CORD (B)	1	
56A	668-5331	PISTON RING (XR1-1856)	1	
57	668-5326	CIRCLIP	2	
* 58	668-5325	PISTON	1	
* 58	669-6313	PISTON	1	FOR EUROPE, USA, CAN (SINCE 8. 2009 FOR FRG)
59	668-5327	PISTON PIN	1	
* 60	668-5316	COVER PACKING (A)	1	FOR EUROPE, USA, CAN (SINCE 8. 2009 FOR FRG)
* 61	668-5314	SCAVENGING COVER (A)	1	FOR EUROPE, USA, CAN (SINCE 8. 2009 FOR FRG)
62	668-5396	CRANK WORM ASS'Y	1	INCLUD. 63-66
63	668-5330	WORM	1	
64	668-5329	OIL SEAL	2	
65	668-5328	BALL BEARING	2	
66	668-5324	CRANK SHAFT	1	
67	668-5418	MAGNETO SUB ASS'Y	1	INCLUD. 68-71
68	668-5336	RETAINING RING D4	2	
69A	668-5332	MAGNETO ROTOR (FLZ33C)	1	
70	668-5335	STARTER PAWL SPRING	2	
71	668-5334	STARTER PAWL	2	
72	668-5410	BOLT WASHER D8	1	
73	668-5337	FLYWHEEL NUT	1	
74	668-5311	CLIP	3	
75A	669-8715	FUEL PIPE	2	
76	668-5308	FUEL GROMMET (A)	2	
77	668-5199	PUMP FILTER BODY	1	
78	668-5339	CRANK CASE	1	
79	668-5412	SEAL LOCK HEX. SOCKET HD. BOLT M5	4	
80	668-5313	DAMPER (B)	1	
81	668-5407	BOLT WASHER D5	1	
82	668-5249	OIL FILTER BODY ASS'Y	1	INCLUD. 81, 83
83	668-5310	OIL FILTER BODY	1	
84	668-5413	DAMPER SET BOLT	4	
85	696-314	DISTANCE PIECE (B)	4	
86	669-6327	DAMPER (A)	4	
87	668-5363	CHAIN CATCHER	1	

PARTS

CS 33EB

ITEM NO.	CODE NO.	DESCRIPTION	NO. USED	REMARKS
* 88B	669-6329	SPIKE SET	1	FOR EUROPE, RUS, AUS, THA, SIN, IND, UAE, MEX
89	668-5369	CHOKE ROD RUBBER	1	
* 90	668-5368	CHOKE BUTTON	1	
* 90	668-5421	CHOKE BUTTON (GREEN)	1	FOR USA
91	668-5364	STOP SWITCH	1	
92	668-5307	ENGINE CASE	1	
93	668-5365	CORD (A)	1	
94	668-5370	AIR VENT VALVE (B)	1	
95	668-5371	AIR VENT SPONGE	1	
96	668-5386	TANK CAP PACKING	2	
* 97	668-5384	FUEL TANK CAP ASS'Y	2	INCLUD. 96
* 97	668-5385	FUEL TANK CAP ASS'Y (GREEN)	2	INCLUD. 96 FOR USA
98	668-5391	NEEDLE ROLLER D3	1	
99	949-454	SPRING WASHER M5 (10 PCS.)	4	
121	669-6328	SEAL LOCK HEX. SOCKET HD. BOLT M5 X 75	2	
* 122A	669-6861	EXHAUST PIPE	1	FOR EUROPE, USA, CAN, AUS
* 123A	669-6862	GAUZE FIXING PLATE	1	FOR USA, CAN, AUS
* 124	668-5344	MUFFLER GAUZE	1	FOR USA, CAN, AUS
* 125	668-5341	MUFFLER	1	
* 125	668-5340	MUFFLER	1	FOR EUROPE, USA, CAN (SINCE 8. 2009 FOR FRG)
* 125	668-5342	MUFFLER	1	FOR AUS
126	668-5346	MUFFLER PACKING	1	
127	668-5382	CLEANER COVER	1	
* 128A	669-6849	CLEANER KNOB	1	
* 128A	669-6850	CLEANER KNOB (GREEN)	1	FOR USA
129A	669-6846	THROTTLE ROD	1	
130A	669-8805	REAR HANDLE GRIP	1	
* 131	668-5350	TRIGGER LOCKOUT (VERMILION)	1	
* 131	668-5420	TRIGGER LOCKOUT (GREEN)	1	FOR USA
132	668-5349	THROTTLE LEVER SPRING	1	
133	668-5282	SPRING PIN 5 X 25	1	
* 134	668-5348	THROTTLE LEVER	1	
* 134	668-5419	THROTTLE LEVER (GREEN)	1	FOR USA
135	668-5351	INNER CAP	1	
* 136	668-5347	REAR HANDLE	1	
* 136A	669-8685	REAR HANDLE	1	SINCE 5. 2011 FOR EUROPE, USA, CAN
137	668-5375	FRONT HANDLE	1	
138	668-5378	CLEANER ELEMENT	1	
139	668-5381	SHUTTER PLATE	1	
* 140	668-5376	CYLINDER COVER	1	
* 140	668-5377	CYLINDER COVER	1	FOR EUROPE, USA, CAN (SINCE 8. 2009 FOR FRG)
* 140A	669-8687	CYLINDER COVER	1	SINCE 5. 2011 FOR EUROPE, USA, CAN
141		CAUTION LABEL	1	
142	668-5373	BRAKE HANDLE	1	
143	668-5374	BRAKE LEVER SPRING	1	
144	668-5356	NEEDLE ROLLER 2.5 X 19.8	2	
145	668-5353	PUMP CASE	1	
146	668-5355	PUMP GEAR SPRING	1	
147	668-5354	PUMP GEAR	1	
148	668-5357	OIL PIPE	1	

PARTS

CS 33EB

ITEM NO.	CODE NO.	DESCRIPTION	NO. USED	REMARKS
149	668-5359	PUMP COVER	1	
150	668-5358	PIPE JOINT	1	
151	668-5372	AIR DEFLECTOR	1	
* 160B	669-6847	RECOIL STARTER	1	
* 160B	669-6848	RECOIL STARTER (B) (GREEN)	1	FOR USA
161		HITACHI LABEL	1	
162	305-558	TAPPING SCREW (W/FLANGE) D5 X 25 (BLACK)	2	
* 163	669-8845	FUEL PIPE (PINK)	1	SINCE 5. 2011 FOR EUROPE, USA, CAN
* 164	669-6970	RETURN GROMMET	1	SINCE 5. 2011 FOR EUROPE, USA, CAN
* 165	669-8846	FUEL PIPE (PINK)	1	SINCE 5. 2011 FOR EUROPE, USA, CAN
* 166	668-5139	PRIMING PUMP COMP.	1	SINCE 5. 2011 FOR EUROPE, USA, CAN
167	669-8847	INTAKE SPACER	1	
* 168	668-5308	FUEL GROMMET (A)	1	SINCE 5. 2011 FOR EUROPE, USA, CAN

STANDARD ACCESSORIES

ITEM NO.	CODE NO.	DESCRIPTION	NO. USED	REMARKS
* 501	668-5401	CHAIN COVER 12"	1	
* 501	668-5439	CHAIN COVER 14"	1	
* 501	668-5440	CHAIN COVER 16"	1	
502	668-5402	COMBI BOX SPANNER 10/19 MM	1	

OPTIONAL ACCESSORIES

ITEM NO.	CODE NO.	DESCRIPTION	NO. USED	REMARKS
* 601A	669-6990	CHAIN BAR 12 INCH 3/8 SPROCKET PRC	1	
* 601A	669-6991	CHAIN BAR 14 INCH 3/8 SPROCKET PRC	1	
* 601A	669-6992	CHAIN BAR 16 INCH 3/8 SPROCKET PRC	1	
602	669-6329	SPIKE SET	1	