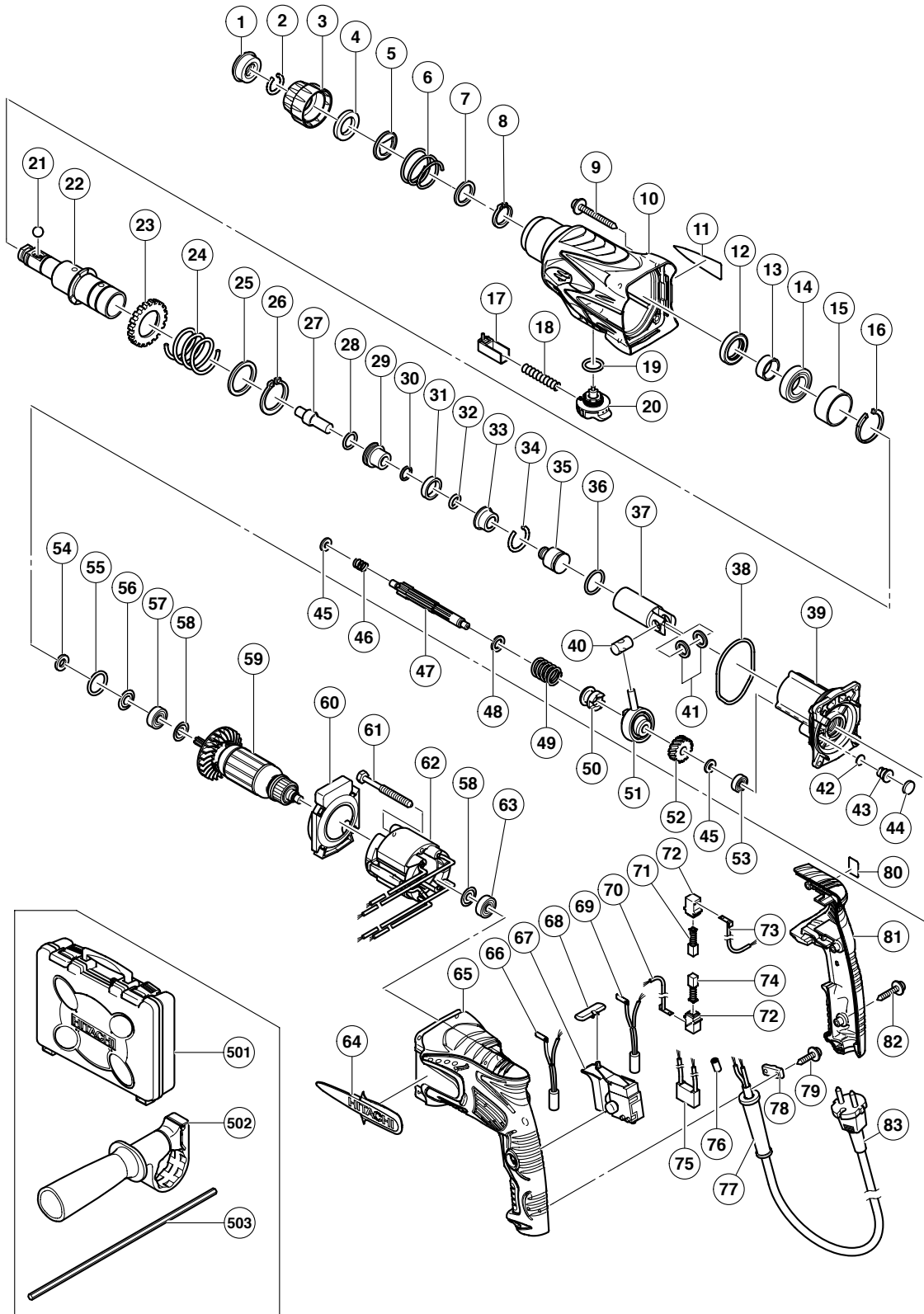


ELECTRIC TOOL PARTS LIST

■ ROTARY HAMMER Model DH 24PB3

2005 · 5 · 20

(E1)



PARTS

DH 24PB3

ITEM NO.	CODE NO.	DESCRIPTION	NO. USED	REMARKS
1	306-345	FRONT CAP	1	
2	306-340	STOPPER RING	1	
3	324-527	GRIP	1	
4	324-528	BALL HOLDER	1	
5	324-526	HOLDER PLATE	1	
6	322-812	HOLDER SPRING	1	
7	984-118	WASHER (B)	1	
8	939-547	RETAINING RING FOR D20 SHAFT (10 PCS.)	1	
9	301-654	TAPPING SCREW (W/FLANGE) D5X35	4	
10	324-546	GEAR COVER	1	
11		NAME PLATE	1	
12	307-688	OIL SEAL	1	
13	322-815	SLEEVE	1	
14	690-4DD	BALL BEARING 6904DDPS2L	1	
15	324-522	SLEEVE (A)	1	
16	322-813	RETAINING RING 37MM	1	
17	324-530	PUSHING BUTTON	1	
18	317-223	PUSHING SPRING	1	
19	878-885	O-RING (S-18)	1	
20	324-529	CHANGE LEVER	1	
21	959-156	STEEL BALL D7.0 (10 PCS.)	1	
22	322-814	CYLINDER	1	
23	301-677	SECOND GEAR	1	
24	301-678	SPRING (A)	1	
25	301-679	WASHER (A)	1	
26	948-310	RETAINING RING FOR D30 SHAFT	1	
27	324-525	SECOND HAMMER	1	
28	944-486	O-RING (1AP-20)	1	
29	324-523	HAMMER HOLDER	1	
30	322-802	O-RING (B)	1	
31	322-805	DAMPER (A)	1	
32	322-808	O-RING (C)	1	
33	324-524	DAMPER HOLDER	1	
34	322-807	STOPPER RING	1	
35	324-535	STRIKER	1	
36	322-834	O-RING (I.D. 16)	1	
37	324-534	PISTON	1	
38	322-793	O-RING (I.D. 66.5)	1	
39	324-542	INNER COVER ASS'Y	1	INCLUD. 42-44
40	322-798	PISTON PIN	1	
41	322-799	WASHER (C)	2	
42	324-543	FELT PACKING (A)	1	
43	324-545	VALVE	1	
44	324-544	FELT PACKING (B)	1	
45	322-795	SPACER	2	
46	322-796	SPRING (B)	1	
47	322-794	SECOND SHAFT	1	
48	301-659	WASHER (B)	1	
49	301-660	CLUTCH SPRING	1	
50	324-532	CLUTCH	1	
51	324-533	RECIPROCATING BEARING	1	

PARTS

DH 24PB3

ITEM NO.	CODE NO.	DESCRIPTION	NO. USED	REMARKS
52	322-797	FIRST GEAR	1	
53	626-VVM	BALL BEARING 626VVC2PS2L	1	
54	322-816	FELT PACKING	1	
55	876-796	O-RING (P-22)	1	
56	322-818	PACKING WASHER	1	
57	608-DDM	BALL BEARING 608DDC2PS2L	1	
58	982-631	WASHER (A)	2	
*	59	360-720U	ARMATURE ASS'Y 110V-120V	1 INCLUD. 57, 58, 63
*	59	360-720E	ARMATURE 220V-230V	1
*	59	360-720F	ARMATURE 240V	1
	60	324-531	FAN GUIDE	1
	61	961-672	HEX. HD. TAPPING SCREW D4X50	2
*	62	340-635C	STATOR 110V-120V	1
*	62	340-635E	STATOR 220V-230V	1
*	62	340-635F	STATOR 240V	1
	63	608-VVM	BALL BEARING 608VVC2PS2L	1
	64	324-539	HITACHI PLATE	1
	65	324-553	HOUSING	1
*	66	324-549	CHOKE COIL (A) BROWN	1 EXCEPT FOR TPE, THA, INA, SYR, SIN, HKG, KUW, GBR (110V), USA, CAN, IND
*	66	324-550	CHOKE COIL (A) BROWN	1 FOR TPE, GBR (110V)
	67	324-536	SWITCH (1P PILLAR TYPE)	1
	68	322-853	PUSHING BUTTON	1
*	69	324-551	CHOKE COIL (A) BLUE	1 EXCEPT FOR TPE, THA, INA, SYR, SIN, HKG, KUW, GBR (110V), USA, CAN, IND
*	69	324-552	CHOKE COIL (A) BLUE	1 FOR TPE, GBR (110V)
*	70	324-538	INTERNAL WIRE (A) (BLUE)	1 FOR THA, INA, SYR, SIN, HKG, KUW, USA, CAN, IND
	71	999-041	CARBON BRUSH (1 PAIR)	1
	72	955-203	BRUSH HOLDER	2
*	73	324-537	INTERNAL WIRE (A) (BROWN)	1 FOR THA, INA, SYR, SIN, HKG, KUW, USA, CAN, IND
	74	999-072	CARBON BRUSH (AUTO STOP TYPE) (1 PAIR)	1
*	75	930-039	NOISE SUPPRESSOR	1 FOR TPE, NZL, AUS, GBR, SAF, EUROPE, FIN, NOR, SWE, DEN, AUT, SUI, CHN, KOR
*	76	981-373	TUBE (D)	2 FOR CORD
*	77	953-327	CORD ARMOR D8.8	1
*	77	938-051	CORD ARMOR D10.1	1
	78	937-631	CORD CLIP	1
	79	984-750	TAPPING SCREW (W/FLANGE) D4X16	2
	80		LABEL (WEEE)	1
	81	324-554	HANDLE COVER	1
	82	301-653	TAPPING SCREW (W/FLANGE) D4X20 (BLACK)	3
*	83	500-390Z	CORD	1 (CORD ARMOR D8.8)
*	83	500-245Z	CORD	1 (CORD ARMOR D10.1) FOR SYR
*	83	500-424Z	CORD	1 (CORD ARMOR D8.8) FOR SIN, KUW
*	83	500-239Z	CORD	1 (CORD ARMOR D10.1) FOR THA
*	83	500-235Z	CORD	1 (CORD ARMOR D8.8) FOR INA, IND
*	83	500-408Z	CORD	1 (CORD ARMOR D8.8) FOR NZL, AUS
*	83	500-249Z	CORD	1 (CORD ARMOR D8.8) FOR USA, CAN
*	83	323-974	CORD	1 (CORD ARMOR D10.1) FOR TPE
*	83	500-440Z	CORD	1 (CORD ARMOR D8.8) FOR HKG
*	83	500-391Z	CORD	1 (CORD ARMOR D8.8) FOR SUI

STANDARD ACCESSORIES

DH 24PB3

ITEM NO.	CODE NO.	DESCRIPTION	NO. USED	REMARKS
501	324-555	CASE	1	
502	324-548	SIDE HANDLE	1	
* 503	303-709	DEPTH GAUGE	1	
* 503	310-331	DEPTH GAUGE	1	FOR USA, CAN

OPTIONAL ACCESSORIES

ITEM NO.	CODE NO.	DESCRIPTION	NO. USED	REMARKS
601	981-840	GREASE (A) FOR HAMMER. HAMMER DRILL (30G)	1	
602	308-471	GREASE FOR HAMMER. HAMMER DRILL (70G)	1	
603	980-927	GREASE FOR HAMMER. HAMMER DRILL (500G)	1	
604	306-885	DUST COLLECTOR (B) ASS'Y	1	INCLUD. 605, 613
605	986-802	DUST COLLECTOR ASS'Y	1	INCLUD. 606-612
606	986-803	DUST COVER	1	
607	986-804	SEAL COVER	1	
608	948-310	RETAINING RING FOR D30 SHAFT	1	
609	958-063	WASHER	1	
610	959-150	STEEL BALL D6.35 (10 PCS.)	19	
611	986-805	OUTER RACE	1	
612	986-806	SOCKET	1	
613	306-910	SOCKET ADAPTER (B)	1	
614	971-787	DUST CUP	1	
615	931-844	STOPPER	1	
616	321-814	DRILL CHUCK 13VLRB-D	1	INCLUD. 617
617	995-344	FLAT HD. SCREW (A) (LEFT HAND) M6X25	1	
618	321-813	DRILL CHUCK 13VLD-D	1	
619	971-511Z	+ DRIVER BIT (A) NO. 2 25L	1	
620	971-512Z	+ DRIVER BIT (A) NO. 3 25L	1	
621	944-477	COTTER	1	
622	982-684	CENTER PIN (A) 109L FOR CORE BIT D32-38	1	
623	982-685	CENTER PIN (B) 104L FOR CORE BIT D45-90	1	
624	982-672	CORE BIT (A) 25MM	1	
625	982-673	CORE BIT (A) 29MM	1	
626	982-674	CORE BIT (A) 32MM	1	INCLUD. 627
627	982-686	GUIDE PLATE (FOR CORE BIT 32MM)	1	
628	982-675	CORE BIT (A) 35MM	1	INCLUD. 629
629	982-687	GUIDE PLATE (FOR CORE BIT 35MM)	1	
630	982-676	CORE BIT (A) 38MM	1	INCLUD. 631
631	982-688	GUIDE PLATE (FOR CORE BIT 38MM)	1	
632	982-677	CORE BIT (B) 45MM	1	INCLUD. 633
633	982-689	GUIDE PLATE (FOR CORE BIT 45MM)	1	
634	982-678	CORE BIT (B) 50MM	1	INCLUD. 635
635	982-690	GUIDE PLATE (FOR CORE BIT 50MM)	1	
636	971-794	ANCHOR SETTING ADAPTER A W1/4" (MANUAL)	1	
637	971-795	ANCHOR SETTING ADAPTER A W5/16" (MANUAL)	1	
638	971-796	ANCHOR SETTING ADAPTER A W3/8" (MANUAL)	1	
639	971-797	ANCHOR SETTING ADAPTER A W1/2" (MANUAL)	1	
640	971-798	ANCHOR SETTING ADAPTER A W5/8" (MANUAL)	1	
641	971-799	ANCHOR SETTING ADAPTER B W1/4" (MANUAL)	1	

OPTIONAL ACCESSORIES

DH 24PB3

ITEM NO.	CODE NO.	DESCRIPTION	NO. USED	REMARKS
642	971-800	ANCHOR SETTING ADAPTER B W5/16" (MANUAL)	1	
643	971-801	ANCHOR SETTING ADAPTER B W3/8" (MANUAL)	1	
644	971-802	ANCHOR SETTING ADAPTER B W1/2" (MANUAL)	1	
645	971-803	ANCHOR SETTING ADAPTER B W5/8" (MANUAL)	1	
646	944-460	TAPER SHANK DRILL BIT D11X100	1	
647	944-461	TAPER SHANK DRILL BIT D12.3X110	1	
648	993-038	TAPER SHANK DRILL BIT D12.7X110	1	
649	944-462	TAPER SHANK DRILL BIT D14.3X110	1	
650	944-500	TAPER SHANK DRILL BIT D14.5X110	1	
651	944-463	TAPER SHANK DRILL BIT D17.5X120	1	
652	944-464	TAPER SHANK DRILL BIT D21.5X140	1	
653	320-859	SYRINGE (BLOW-OUT BULB TYPE)	1	
654	303-046	BULL POINT (SDS+) 250MM (ROUND SHANK TYPE)	1	
655	303-044	CHEMICAL ANCHOR ADAPTER (SDS+) 12.7MMX90L	1	
656	303-045	CHEMICAL ANCHOR ADAPTER (SDS+) 19.0MMX100L	1	
657	303-334	CHUCK HANDLE	1	
658	302-976	ANCHOR SETTING ADAPTER A (SDS+) W1/4X260L	1	
659	930-515	CHUCK WRENCH 10G	1	
660	302-975	ANCHOR SETTING ADAPTER A (SDS+) W5/16X260L	1	
661	303-621	ANCHOR SETTING ADAPTER A (SDS+) W3/8X160L	1	
662	302-974	ANCHOR SETTING ADAPTER A (SDS+) W3/8X260L	1	
663	302-979	ANCHOR SETTING ADAPTER B (SDS+) W1/4X260L	1	
664	302-978	ANCHOR SETTING ADAPTER B (SDS+) W5/16X260L	1	
665	303-622	ANCHOR SETTING ADAPTER B (SDS+) W3/8X160L	1	
666	302-977	ANCHOR SETTING ADAPTER B (SDS+) W3/8X260L	1	
667	303-332	HAMMER DRILL CHUCK SET 13MM	1	INCLUD. 668, 669
668	303-334	CHUCK HANDLE	1	
669	303-335	RUBBER CAP	1	
670	303-617	TAPER SHANK ADAPTER (SDS PLUS) NO. 1	1	
671	303-618	TAPER SHANK ADAPTER (SDS PLUS) NO. 2	1	
672	303-619	A-TAPER SHANK ADAPTER (SDS PLUS)	1	
673	303-620	B-TAPER SHANK ADAPTER (SDS PLUS)	1	
674	981-122	SPECIAL SCREW M6X22	1	
675	303-625	CORE BIT SHANK (SDS PLUS) 25-38MM 105L	1	
676	303-626	CORE BIT SHANK (SDS PLUS) 25-38MM 300L	1	
677	303-627	CORE BIT SHANK (SDS PLUS) 45-90MM 300L	1	
678	303-624	CHUCK ADAPTER (D) (SDS PLUS)	1	
679	321-825	DRILL CHUCK AND ADAPTER SET	1	INCLUD. 680
680	303-623	CHUCK ADAPTER (G) (SDS PLUS)	1	
681	306-369	DRILL BIT (SLENDER SHAFT) D3.4X90	1	
682	306-368	DRILL BIT (SLENDER SHAFT) D3.5X90	1	
683	306-370	ADAPTER FOR SLENDER SHAFT (SDS PLUS)	1	