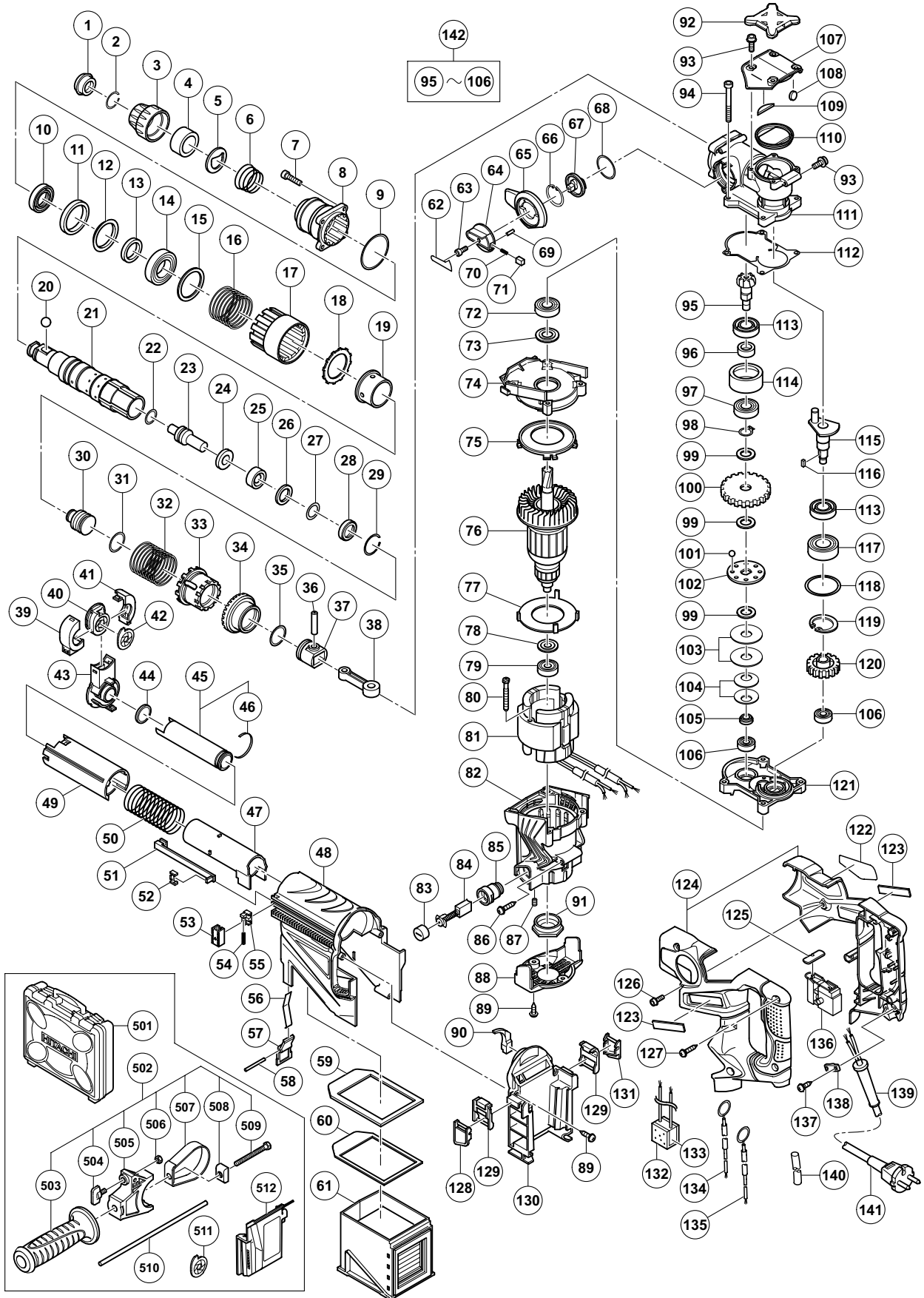


ELECTRIC TOOL PARTS LIST

■ ROTARY HAMMER Model DH 28PD

2009·9·7
(E1)



PARTS

DH 28PD

ITEM NO.	CODE NO.	DESCRIPTION	NO. USED	REMARKS
1	306-345	FRONT CAP	1	
2	306-340	STOPPER RING	1	
3	324-527	GRIP	1	
4	330-192	BALL HOLDER	1	
5	324-526	HOLDER PLATE	1	
6	330-191	HOLDER SPRING	1	
7	992-803	SEAL LOCK HEX. SOCKET HD. BOLT M6 X 20	4	
8	330-174	CYLINDER CASE	1	
9	990-067	O-RING (1AS-50)	1	
10	328-867	OIL SEAL	1	
11	330-175	DAMPER (A)	1	
12	330-184	DAMPER WASHER (B)	1	
13	304-020	FELT PACKING (A)	1	
14	690-5DD	BALL BEARING 6905DDUCMNS7S	1	
15	330-176	WASHER (A)	1	
16	330-177	LOCK SPRING	1	
17	330-178	LOCK SLEEVE	1	
18	330-179	WASHER (B)	1	
19	330-187	SLIDE SLEEVE	1	
20	959-156	STEEL BALL D7.0 (10 PCS.)	1	
21	330-180	CYLINDER	1	
22	323-058	O-RING (C)	1	
23	330-181	SECOND HAMMER	1	
24	330-182	DAMPER WASHER	1	
25	330-183	DAMPER (B)	1	
26	331-672	DAMPER HOLDER (A)	1	
27	330-186	O-RING (A)	1	
28	331-673	DAMPER HOLDER (B)	1	
29	323-062	STOPPER RING	1	
30	330-185	STRIKER	1	
31	319-577	O-RING (I.D 19.2)	1	
32	330-188	CLUTCH SPRING	1	
33	330-189	CLUTCH	1	
34	330-190	BEVEL GEAR	1	
35	319-577	O-RING (I.D 19.2)	1	
36	330-173	PISTON PIN	1	
37	330-172	PISTON	1	
38	319-585	CONNECTING ROD	1	
39	330-236	NOZZLE (C)	1	
40	330-237	NOZZLE SEAL	1	
41	330-235	NOZZLE (B)	1	
42	330-238	RUBBER CAP	1	
43	330-234	NOZZLE (A)	1	
44	330-231	FELT WASHER	1	
45	330-229	INNER PIPE (A) ASS'Y	1	INCLUD. 46
46	331-728	DOUBLE FACED TAPE	1	
47	330-230	INNER PIPE (B)	1	
48	330-221	DUST CASING (A)	1	
49	330-233	OUTER PIPE	1	
50	330-232	PIPE SPRING	1	

PARTS

DH 28PD

ITEM NO.	CODE NO.	DESCRIPTION	NO. USED	REMARKS
51	330-242	ADJUSTING ROD	1	
52	330-246	STOPPER	1	
53	330-243	ADJUSTER (A)	2	
54	330-245	SPRING	2	
55	330-244	ADJUSTER (C)	2	
56	330-223	LEAF SPRING	1	
57	330-224	LEVER	1	
58	330-225	PIN D3	1	
59	330-226	SEAL PLATE (A)	1	
60	330-227	SEAL PACKING (A)	1	
61	330-228	DUST BOX	1	
62	321-867	LEVER LABEL	1	
63	983-162	SEAL LOCK HEX. SOCKET HD. BOLT M4 X 12	1	
64	321-309	CHANGE LEVER	1	
65	330-207	LEVER HOLDER	1	
66	939-556	RETAINING RING FOR D35 HOLE (10 PCS.)	1	
67	330-206	LEVER SHAFT	1	
68	330-205	O-RING	1	
69	321-312	PIN D2 X 10	1	
70	321-310	LEVER SPRING	1	
71	321-311	PUSHING BUTTON	1	
72	600-1DD	BALL BEARING 6001DDCMPS2L	1	
73	330-249	DUST WASHER	1	
74	330-250	CASING	1	
75	330-248	FAN GUIDE (B)	1	
* 76	360-859C	ARMATURE 110V-115V	1	
* 76	360-859U	ARMATURE ASS'Y 120V	1	INCLUD. 72, 73, 78, 79
* 76	360-859E	ARMATURE 220V-230V	1	
* 76	360-859F	ARMATURE 240V	1	
77	330-247	FAN GUIDE (A)	1	
78	982-631	WASHER (A)	1	
79	608-VVM	BALL BEARING 608VVC2PS2L	1	
80	980-864	HEX. HD. TAPPING SCREW D5 X 40	2	
* 81	340-739C	STATOR 110V-115V	1	
* 81	340-739G	STATOR 120V	1	
* 81	340-739E	STATOR 220V-230V	1	
* 81	340-739H	STATOR 220V-230V	1	FOR SIN
* 81	340-739J	STATOR 240V	1	
82	330-201	HOUSING ASS'Y	1	INCLUD. 85, 87
83	935-829	BRUSH CAP	2	
84	999-043	CARBON BRUSH (1 PAIR)	2	
85	957-051	BRUSH HOLDER	2	
86	302-089	TAPPING SCREW (W/FLANGE) D5 X 20 (BLACK)	2	
87	938-477	HEX. SOCKET SET SCREW M5 X 8	2	
88	330-203	TAIL COVER	1	
89	307-811	TAPPING SCREW (W/FLANGE) D4 X 16 (BLACK)	6	
90	331-727	DAMPER (B)	1	
91	310-111	BEARING BUSHING (B)	1	
92	331-729	TOP COVER	1	
93	994-192	HEX. SOCKET HD. BOLT (W/FLANGE) M5 X 16	6	

PARTS

DH 28PD

ITEM NO.	CODE NO.	DESCRIPTION	NO. USED	REMARKS
94	330-251	SEAL LOCK BOLT M5 X 55	4	
95	330-196	BEVEL PINION	1	
96	330-197	COLLAR	1	
97	600-1DD	BALL BEARING 6001DDCMPS2L	1	
98	939-542	RETAINING RING FOR D12 SHAFT (10 PCS.)	1	
99	992-503	WASHER	3	
100	330-198	SECOND GEAR	1	
101	959-155	STEEL BALL D3.97 (10 PCS.)	8	
102	992-916	CLUTCH PLATE	1	
103	992-926	SPRING PLATE	2	
104	980-877	BELLEVILLE SPRING	2	
105	330-199	BUSHING	1	
106	608-VVM	BALL BEARING 608VVC2PS2L	2	
107	330-204	CRANK COVER	1	
108	324-544	FELT PACKING (B)	1	
109	331-674	FELT PACKING	1	
110	331-675	RUBBER SEAL	1	
111	330-169	CRANK CASE	1	
112	331-676	SEAL PACKING	1	
113	981-851	OIL SEAL (B)	2	
114	330-194	SLEEVE	1	
115	330-170	CRANK SHAFT	1	
116	944-109	FEATHER KEY 3 X 3 X 8	1	
117	600-2DD	BALL BEARING 6002DDCMPS2L	1	
118	872-767	O-RING (S-32)	1	
119	948-001	RETAINING RING FOR D32 HOLE	1	
120	330-171	FIRST GEAR	1	
121	330-200	GEAR COVER	1	
122		NAME PLATE	1	
123	886-342	HITACHI PLATE	2	
124	330-257	HANDLE (A). (B) SET	1	
125	322-853	PUSHING BUTTON	1	
126	316-228	HEX. SOCKET HD. BOLT (W/FLANGE) M4 X 10	4	
127	307-028	TAPPING SCREW (W/FLANGE) D4 X 25 (BLACK)	3	
128	330-240	KNOB (A)	1	
129	330-239	LATCH	2	
130	330-222	DUST CASING (B)	1	
131	330-241	KNOB (B)	1	
* 132	317-492	SUPPORT (B)	1	FOR EUROPE
* 133	930-039	NOISE SUPPRESSOR	1	FOR EUROPE
* 134	330-254	INTERNAL WIRE 18AWG X 300L (BLUE)	1	
* 134	330-217	INTERNAL WIRE 16AWG X 300L (BLUE)	1	FOR USA, CAN, GBR (110V)
* 135	330-255	INTERNAL WIRE 18AWG X 300L (BROWN)	1	
* 135	330-218	INTERNAL WIRE 16AWG X 300L (BROWN)	1	FOR USA, CAN, GBR (110V)
* 136	331-677	SWITCH	1	
* 136	330-214	SWITCH (1P PILLAR TYPE)	1	FOR USA, CAN
137	984-750	TAPPING SCREW (W/FLANGE) D4 X 16	2	
138	960-266	CORD CLIP	1	
139	953-327	CORD ARMOR D8.8	1	
140	321-322	VINYL TUBE	1	

PARTS

DH 28PD

ITEM NO.	CODE NO.	DESCRIPTION	NO. USED	REMARKS		
*	141	500-390Z	CORD	1	(CORD ARMOR D8.8)	
*	141	500-465Z	CORD	1	(CORD ARMOR D8.8) FOR GBR (110V)	
*	141	500-446Z	CORD	1	(CORD ARMOR D8.8) FOR GBR (230V)	
*	141	500-249Z	CORD	1	(CORD ARMOR D8.8) FOR USA, CAN	
*	141	500-424Z	CORD	1	(CORD ARMOR D8.8) FOR KUW, SIN	
	142	330-195	SLIP CLUTCH ASS'Y	1	INCLUD. 95-106	

STANDARD ACCESSORIES

ITEM NO.	CODE NO.	DESCRIPTION	NO. USED	REMARKS		
	501	330-220	CASE	1		
	502	330-208	SIDE HANDLE ASS'Y	1	INCLUD. 503-509	
	503	330-209	SIDE HANDLE	1		
	504	307-947	WING BOLT M6 X 12	1		
	505	330-210	MOUNT	1		
	506	949-556	NUT M6 (10 PCS.)	1		
	507	330-212	BAND	1		
	508	330-211	BOLT HOLDER	1		
	509	330-213	BOLT M8 X 45	1		
	510	982-671	STOPPER ROD	1		
	511	330-238	RUBBER CAP	1		
	512	331-730	SUCTION COVER	1		

OPTIONAL ACCESSORIES

DH 28PD

ITEM NO.	CODE NO.	DESCRIPTION	NO. USED	REMARKS
601	303-046	BULL POINT (SDS+) 250MM (ROUND SHANK TYPE)	1	
602	303-044	CHEMICAL ANCHOR ADAPTER (SDS+) 12.7MM X 90L	1	
603	303-045	CHEMICAL ANCHOR ADAPTER (SDS+) 19.0MM X 100L	1	
604	303-334	CHUCK HANDLE	1	
605	302-976	ANCHOR SETTING ADAPTER A (SDS+) W1/4 X 260L	1	
606	930-515	CHUCK WRENCH 10G	1	
607	302-975	ANCHOR SETTING ADAPTER A (SDS+) W5/16 X 260L	1	
608	303-621	ANCHOR SETTING ADAPTER A (SDS+) W3/8 X 160L	1	
609	302-974	ANCHOR SETTING ADAPTER A (SDS+) W3/8 X 260L	1	
610	302-979	ANCHOR SETTING ADAPTER B (SDS+) W1/4 X 260L	1	
611	302-978	ANCHOR SETTING ADAPTER B (SDS+) W5/16 X 260L	1	
612	303-622	ANCHOR SETTING ADAPTER B (SDS+) W3/8 X 160L	1	
613	302-977	ANCHOR SETTING ADAPTER B (SDS+) W3/8 X 260L	1	
614	303-617	TAPER SHANK ADAPTER (SDS PLUS) NO.1	1	
615	303-618	TAPER SHANK ADAPTER (SDS PLUS) NO.2	1	
616	303-619	A-TAPER SHANK ADAPTER (SDS PLUS)	1	
617	303-620	B-TAPER SHANK ADAPTER (SDS PLUS)	1	
618	981-122	SPECIAL SCREW M6 X 22	1	
619	303-627	CORE BIT SHANK (SDS PLUS) 45-90MM 300L	1	
620	303-625	CORE BIT SHANK (SDS PLUS) 25-38MM 105L	1	
621	303-626	CORE BIT SHANK (SDS PLUS) 25-38MM 300L	1	
622	303-624	CHUCK ADAPTER (D) (SDS PLUS)	1	
623	321-825	DRILL CHUCK AND ADAPTER SET	1	INCLUD. 624, 625
624	303-623	CHUCK ADAPTER (G) (SDS PLUS)	1	
625	321-814	DRILL CHUCK 13VLRB-D	1	INCLUD. 626
626	995-344	FLAT HD. SCREW (A) (LEFT HAND) M6 X 25	1	
627	321-813	DRILL CHUCK 13VLD-D	1	
628	980-927	GREASE FOR HAMMER. HAMMER DRILL (500G)	1	
629	981-840	GREASE (A) FOR HAMMER. HAMMER DRILL (30G)	1	
630	308-471	GREASE FOR HAMMER. HAMMER DRILL (70G)	1	
631	971-511Z	+ DRIVER BIT (A) NO.2 25L	1	
632	971-512Z	+ DRIVER BIT (A) NO.3 25L	1	
633	944-477	COTTER	1	
634	982-684	CENTER PIN (A) 109L FOR CORE BIT D32-38	1	
635	982-685	CENTER PIN (B) 104L FOR CORE BIT D45-90	1	
636	315-921	ADAPTER (A) FOR HAMMER DRILL	1	
637	982-672	CORE BIT (A) 25MM	1	
638	982-673	CORE BIT (A) 29MM	1	
639	982-674	CORE BIT (A) 32MM	1	INCLUD. 640
640	982-686	GUIDE PLATE (FOR CORE BIT 32MM)	1	
641	982-675	CORE BIT (A) 35MM	1	INCLUD. 642
642	982-687	GUIDE PLATE (FOR CORE BIT 35MM)	1	
643	982-676	CORE BIT (A) 38MM	1	INCLUD. 644
644	982-688	GUIDE PLATE (FOR CORE BIT 38MM)	1	
645	982-677	CORE BIT (B) 45MM	1	INCLUD. 646
646	982-689	GUIDE PLATE (FOR CORE BIT 45MM)	1	
647	982-678	CORE BIT (B) 50MM	1	INCLUD. 648
648	982-690	GUIDE PLATE (FOR CORE BIT 50MM)	1	
649	982-679	CORE BIT (B) 65MM	1	INCLUD. 650
650	982-691	GUIDE PLATE (FOR CORE BIT 65MM)	1	

OPTIONAL ACCESSORIES

DH 28PD

ITEM NO.	CODE NO.	DESCRIPTION	NO. USED	REMARKS
651	982-680	CORE BIT (B) 80MM	1	INCLUD. 652
652	982-692	GUIDE PLATE (FOR CORE BIT 80MM)	1	
653	971-794	ANCHOR SETTING ADAPTER A W1/4" (MANUAL)	1	
654	971-795	ANCHOR SETTING ADAPTER A W5/16" (MANUAL)	1	
655	971-796	ANCHOR SETTING ADAPTER A W3/8" (MANUAL)	1	
656	971-797	ANCHOR SETTING ADAPTER A W1/2" (MANUAL)	1	
657	971-798	ANCHOR SETTING ADAPTER A W5/8" (MANUAL)	1	
658	971-799	ANCHOR SETTING ADAPTER B W1/4" (MANUAL)	1	
659	971-800	ANCHOR SETTING ADAPTER B W5/16" (MANUAL)	1	
660	971-801	ANCHOR SETTING ADAPTER B W3/8" (MANUAL)	1	
661	971-802	ANCHOR SETTING ADAPTER B W1/2" (MANUAL)	1	
662	971-803	ANCHOR SETTING ADAPTER B W5/8" (MANUAL)	1	
663	944-460	TAPER SHANK DRILL BIT D11 X 100	1	
664	944-461	TAPER SHANK DRILL BIT D12.3 X 110	1	
665	993-038	TAPER SHANK DRILL BIT D12.7 X 110	1	
666	944-462	TAPER SHANK DRILL BIT D14.3 X 110	1	
667	944-500	TAPER SHANK DRILL BIT D14.5 X 110	1	
668	944-463	TAPER SHANK DRILL BIT D17.5 X 120	1	
669	944-464	TAPER SHANK DRILL BIT D21.5 X 140	1	
670	320-859	SYRINGE (BLOW-OUT BULB TYPE)	1	
671	303-571	DRILL BIT (SDS PLUS) D4.0 X 110	1	
672	303-575	DRILL BIT (SDS PLUS) D5.0 X 110	1	
673	303-578	DRILL BIT (SDS PLUS) D5.0 X 160	1	
674	303-576	DRILL BIT (SDS PLUS) D5.5 X 110	1	
675	303-581	DRILL BIT (SDS PLUS) D6.5 X 160	1	
676	303-582	DRILL BIT (SDS PLUS) D7.0 X 160	1	
677	303-584	DRILL BIT (SDS PLUS) D8.0 X 160	1	
678	303-585	DRILL BIT (SDS PLUS) D8.5 X 160	1	
679	303-586	DRILL BIT (SDS PLUS) D9.0 X 160	1	
680	303-591	DRILL BIT (SDS PLUS) D12.0 X 160	1	
681	303-606	DRILL BIT (SDS PLUS) D12.0 X 260	1	
682	303-593	DRILL BIT (SDS PLUS) D12.7 X 160	1	
683	303-595	DRILL BIT (SDS PLUS) D14.0 X 160	1	
684	303-598	DRILL BIT (SDS PLUS) D15.0 X 160	1	
685	303-599	DRILL BIT (SDS PLUS) D16.0 X 160	1	
686	303-611	DRILL BIT (SDS PLUS) D16.0 X 260	1	
687	303-601	DRILL BIT (SDS PLUS) D17.0 X 160	1	
688	303-613	DRILL BIT (SDS PLUS) D19.0 X 260	1	
689	303-614	DRILL BIT (SDS PLUS) D20.0 X 250	1	
690	303-615	DRILL BIT (SDS PLUS) D22.0 X 250	1	
691	303-616	DRILL BIT (SDS PLUS) D25.0 X 450	1	
692	971-787	DUST CUP	1	
693	318-085	SYRINGE (BELLOWS TYPE)	1	
694	306-885	DUST COLLECTOR (B) ASS'Y	1	INCLUD. 695, 703
695	986-802	DUST COLLECTOR ASS'Y	1	INCLUD. 696-702
696	986-803	DUST COVER	1	
697	986-804	SEAL COVER	1	
698	948-310	RETAINING RING FOR D30 SHAFT	1	
699	958-063	WASHER	1	
700	959-150	STEEL BALL D6.35 (10 PCS.)	19	

