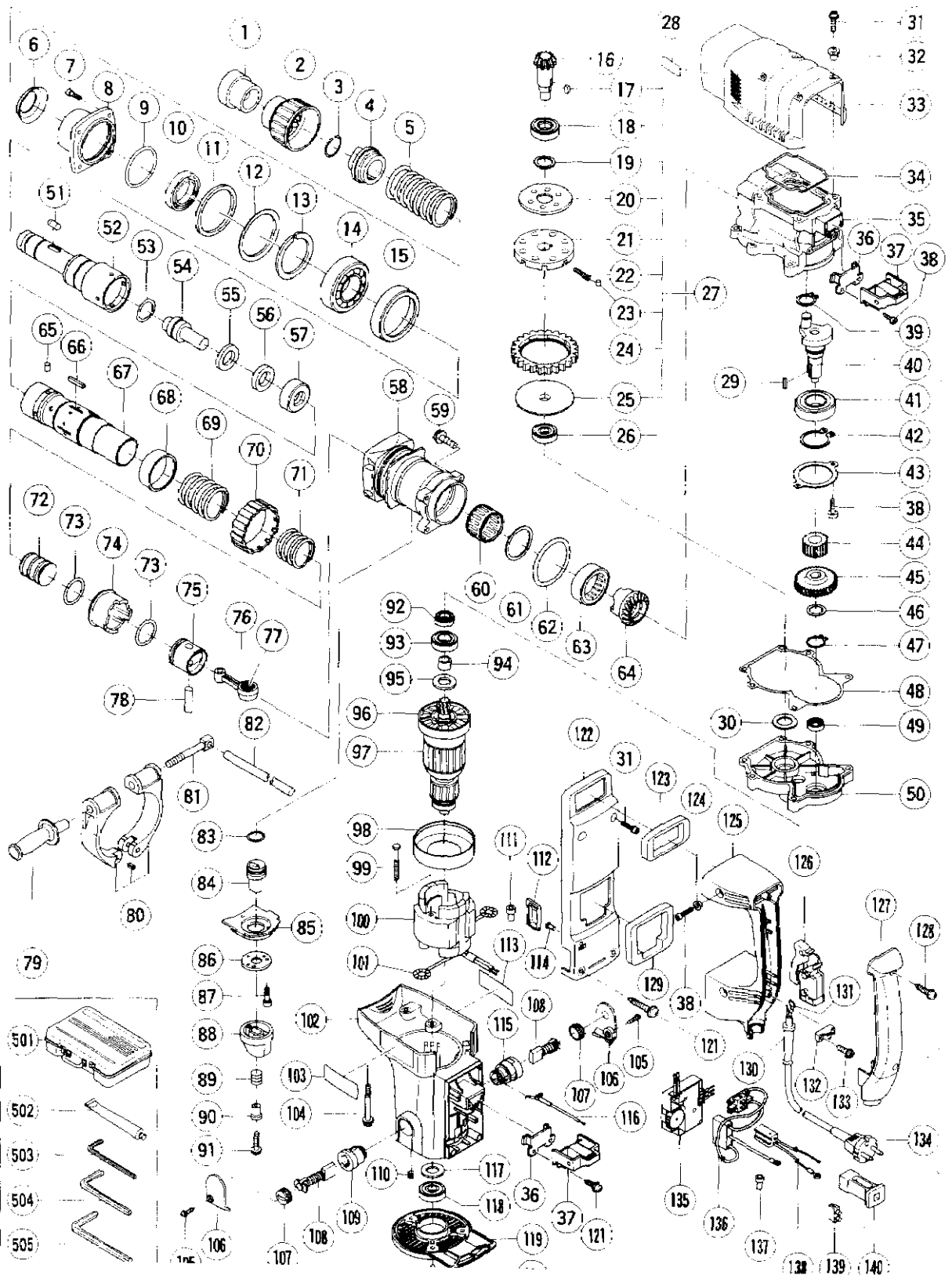


ELECTRIC TOOL PARTS LIST

■ HAMMER DRILL
Model DH 50MB

2000 · 1 · 30
(E1)



PARTS

DH 50MB

ITEM NO.	CODE NO.	DESCRIPTION	NO. USED	REMARKS
1	313-415	FRONT CAP	1	
2	318-608	GRIP	1	
3	318-590	STOPPER RING	1	
4	313-413	NEEDLE HOLDER	1	
5	313-419	RETAINER SPRING	1	
6	318-589	SPRING HOLDER	1	
7	880-810	NYLOCK HEX. SOCKET HD. BOLT M8X25	4	
8	318-587	FRONT COVER	1	
9	878-863	O-RING (S-70)	1	
10	318-588	OIL SEAL (NBR710)	1	
11	318-586	URETHANE RING	1	
12	318-585	URETHANE RING HOLDER	1	
13	318-582	RETAINING RING D40	1	
14	600-8CM	BALL BEARING 6008CM	1	
15	318-581	SLEEVE	1	
16	318-551	BEVEL PINION	1	
17	944-109	FEATHER KEY 3X3X8	1	
18	620-2DD	BALL BEARING 6202DDCMPS2L	1	
19	313-058	WASHER	1	
20	318-552	WASHER (A)	1	
21	318-554	GEAR HOLDER	1	
22	318-555	SPRING (C)	8	
23	313-057	NEEDLE PIN D6X6	8	
24	318-553	SECOND GEAR	1	
25	318-556	SPACER	1	
26	629-VVM	BALL BEARING 629VVC2PS2L	1	
27	318-550	SLIP CLUTCH ASS'Y	1	INCLUD.16-26
28		SDS-MAX LABEL	1	
29	945-072	FEATHER KEY 5X5X15	2	
30	944-525	BEARING WASHER (C)	1	
31	313-082	NYLOCK BOLT (W/FLANGE) M5X16	6	
32	991-711	DISTANCE PIECE (B)	4	
33	318-584	CRANK CASE COVER ASS'Y	1	INCLUD.32
34	313-084	RUBBER SEAL	1	
35	318-543	CRANK CASE	1	
36	980-750	GUIDE PLATE	2	
37	980-727	HANDLE RUBBER	2	
38	878-181	NYLOCK HEX. SOCKET HD. BOLT M5X16	8	
39	939-542	RETAINING RING FOR D12 SHAFT (10 PCS.)	1	
40	318-544	CRANK SHAFT	1	
41	620-5DD	BALL BEARING 6205DDCMPS2L	1	
42	965-469	RETAINING RING FOR D25 SHAFT	1	
43	318-548	BEARING COVER	1	
44	318-545	SECOND PINION	1	
45	318-546	FIRST GEAR	1	
46	318-547	THRUST WASHER	1	
47	967-261	RETAINING RING FOR D17 SHAFT	1	
48	318-549	SEAL PACKING	1	
49	939-299	NEEDLE BEARING (M661)	1	
50	318-595	GEAR COVER	1	
51	313-421	NEEDLE ROLLER D8X20	2	

PARTS

DH 50MB

ITEM No.	CODE NO.	DESCRIPTION	NO. USED	REMARKS
52	318-580	RETAINER SLEEVE	1	
53	986-104	O-RING	1	
54	318-564	SECOND HAMMER	1	
55	318-565	DAMPER WASHER	1	
56	318-566	DAMPER	1	
57	318-567	DAMPER HOLDER	1	
58	318-568	CYLINDER CASE	1	
59	318-451	NYLOCK BOLT (W/FLANGE) M6X35	4	
60	318-560	NEEDLE BEARING	1	
61	981-973	CYLINDER WASHER	1	
62	985-779	O-RING (D)	1	
63	318-659	NEEDLE BEARING	1	
64	318-559	BEVEL GEAR	1	
65	313-057	NEEDLE PIN D6X6	4	
66	971-750	FEATHER KEY 3X3X20	2	
67	318-558	CYLINDER	1	
68	318-583	SLEEVE (A)	1	
69	318-563	LOCK SPRING	1	
70	318-562	LOCK SLEEVE	1	
71	318-631	CLUTCH SPRING	1	
72	318-630	STRIKER	1	
73	318-917	O-RING (FPM 710)	1	
74	318-561	CLUTCH	1	
75	985-772	PISTON	1	
76	318-557	CONNECTING ROD ASS'Y	1	INCLUD.77
77	980-756	NEEDLE BEARING (NSK AJ50 1203)	1	
78	955-593	PISTON PIN	1	
79	318-574	SIDE HANDLE	1	
80	318-575	HANDLE HOLDER	1	
81	318-576	HANDLE BOLT	1	
82	971-786	STOPPER ROD	1	
83	873-095	O-RING (P-16)	1	
84	318-577	LEVER SHAFT	1	
85	318-578	UNDER COVER	1	
86	313-411	SHAFT COVER	1	
87	318-579	HEX SOCKET HD. BOLT (W/WASHER) M4X12	2	
88	313-410	LEVER	1	
89	307-605	SPRING	1	
90	313-424	SLEEVE	1	
91	313-077	NYLOCK BOLT (W/FLANGE) M5X25	1	
92	318-596	OIL SEAL (FPM 707)	1	
93	620-3VV	BALL BEARING 6203VVCMP2L	1	
94	318-597	SLEEVE (B)	1	
95	318-594	DUST WASHER	1	
96	318-918	FAN	1	
* 97	360-520U	ARMATURE ASS'Y 110V-115V	1	INCLUD.93-96,117,118
* 97	360-520D	ARMATURE ASS'Y 120V-127V	1	INCLUD.96
* 97	360-520E	ARMATURE ASS'Y 220V-230V	1	INCLUD.96
* 97	360-520F	ARMATURE ASS'Y 240V	1	INCLUD.96
98	318-633	FAN GUIDE	1	
99	953-121	HEX. HD. TAPPING SCREW D5X50	2	

PARTS

DH 50MB

ITEM No.	CODE NO.	DESCRIPTION	NO. USED	REMARKS
*	100	340-463C	STATOR ASS'Y 110V-115V	1 INCLUD.101
*	100	340-463D	STATOR ASS'Y 120V-127V	1 INCLUD.101
*	100	340-463E	STATOR ASS'Y 220V-230V	1 INCLUD.101
*	100	340-463F	STATOR ASS'Y 240V	1 INCLUD.101
*	100	340-463G	STATOR ASS'Y 115V	1 INCLUD.101 FOR USA,CAN
	101	958-032	BRUSH TERMINAL	2
	102	318-607	HOUSING ASS'Y	1 INCLUD.109,110,115,116
	103		HITACHI LABEL	1
	104	318-570	NYLOCK BOLT (W/FLANGE) M6X40	6
	105	307-811	TAPPING SCREW (W/FLANGE) D4X16 (BLACK)	2
	106	318-599	BRUSH CAP COVER	2
	107	940-540	BRUSH CAP	2
	108	999-077	CARBON BRUSH (AUTO STOP TYPE) (1 PAIR)	2
	109	980-487	BRUSH HOLDER	1
	110	938-477	HEX. SOCKET SET SCREW M5X8	2
	111	959-141	CONNECTOR 50092 (10 PCS.)	3
	112	313-948	DIAL FRAME	1
	113		NAME PLATE	1
	114	318-632	PRISM	1
	115	318-593	BRUSH HOLDER	1
	116		PIECE	1
	117	944-954	BEARING WASHER	1
	118	620-1VV	BALL BEARING 6201VVCMP52L	1
	119	318-598	TAIL COVER	1
	120	303-273	TAPPING SCREW (W/FLANGE) D5X16	3
	121	305-558	TAPPING SCREW (W/FLANGE) D5X25 (BLACK)	4
	122	318-571	SIDE COVER ASS'Y	1 INCLUD.114,123,129
	123	318-572	HANDLE PACKING (A)	1
	124	991-711	DISTANCE PIECE (B)	4
	125	318-601	HANDLE	1
	126	313-093	SWITCH (C) (2P SCREW TYPE W/O LOCK)	1
	127	318-602	HANDLE COVER	1
	128	301-653	TAPPING SCREW (W/FLANGE) D4X20 (BLACK)	2
	129	318-573	HANDLE PACKING (B)	1
*	130	940-778	CORD ARMOR D10.7	1
*	130	958-049	CORD ARMOR D8.2	1
*	131	992-810	TERMINAL	1
*	131	980-063	TERMINAL	1 FOR SAF,AUS
*	131	930-804	TERMINAL M4.0 (10 PCS.)	1 FOR USA,CAN
*	132	960-266	CORD CLIP	1
*	132	981-987Z	CORD CLIP	1 FOR SUI
	133	984-750	TAPPING SCREW (W/FLANGE) D4X16	2
*	134	500-390Z	CORD	1 (CORD ARMOR D10.7)
*	134	500-446Z	CORD	1 (CORD ARMOR D10.7) FOR GBR(230V)
*	134	500-434Z	CORD	1 (CORD ARMOR D10.7) FOR USA,CAN
*	134	500-408Z	CORD	1 (CORD ARMOR D8.2) FOR AUS
*	134	500-391Z	CORD	1 (CORD ARMOR D10.7) FOR SUI
*	134	500-460Z	CORD	1 (CORD ARMOR D10.7) FOR GBR(110V)
*	135	318-605	CONTROLLER CIRCUIT	1
*	135	318-591	CONTROLLER CIRCUIT	1 FOR GBR(110V)
*	135	318-606	CONTROLLER CIRCUIT	1 FOR USA,CAN

STANDARD ACCESSORIES

DH 50MB

ITEM No.	CODE NO.	DESCRIPTION	NO. USED	REMARKS
501	318-646	CASE (PLASTIC)	1	
502	981-840	GREASE (A) FOR HAMMER.HAMMER DRILL (30G)	1	
503	944-458	HEX. BAR WRENCH 4MM	1	
504	944-459	HEX. BAR WRENCH 5MM	1	
505	872-422	HEX. BAR WRENCH 6MM	1	

OPTIONAL ACCESSORIES

ITEM No.	CODE NO.	DESCRIPTION	NO. USED	REMARKS
601	317-483	DRILL BIT (SDS MAX) D10.5X305	1	
602	317-484	DRILL BIT (SDS MAX) D12.5X305	1	
603	317-485	DRILL BIT (SDS MAX) D12.7X305	1	
604	317-486	DRILL BIT (SDS MAX) D14.3X305	1	
605	317-487	DRILL BIT (SDS MAX) D14.5X305	1	
606	313-448	DRILL BIT (SDS MAX) D16X340	1	
607	313-449	DRILL BIT (SDS MAX) D19X340	1	
608	313-450	DRILL BIT (SDS MAX) D22X320	1	
609	313-451	DRILL BIT (SDS MAX) D25X320	1	
610	313-452	DRILL BIT (SDS MAX) D28X370	1	
611	313-453	DRILL BIT (SDS MAX) D32X370	1	
612	313-454	DRILL BIT (SDS MAX) D38X370	1	
613	313-455	DRILL BIT (SDS MAX) D40X370	1	
614	313-456	DRILL BIT (SDS MAX) D16X540	1	
615	313-457	DRILL BIT (SDS MAX) D19X540	1	
616	313-458	DRILL BIT (SDS MAX) D22X520	1	
617	313-459	DRILL BIT (SDS MAX) D25X520	1	
618	313-460	DRILL BIT (SDS MAX) D28X570	1	
619	313-461	DRILL BIT (SDS MAX) D32X570	1	
620	313-462	DRILL BIT (SDS MAX) D38X570	1	
621	313-463	DRILL BIT (SDS MAX) D40X570	1	
622	944-460	TAPER SHANK DRILL BIT D11X100	1	
623	944-461	TAPER SHANK DRILL BIT D12.3X110	1	
624	993-038	TAPER SHANK DRILL BIT D12.7X110	1	
625	944-462	TAPER SHANK DRILL BIT D14.3X110	1	
626	944-500	TAPER SHANK DRILL BIT D14.5X110	1	
627	944-463	TAPER SHANK DRILL BIT D17.5X120	1	
628	313-464	TAPER SHANK ADAPTER ASS'Y (SDS MAX) NO.1	1	INCLUD.629
629	944-477	COTTER	1	
630	313-465	ADAPTER (SDS MAX) FOR SDS PLUS SHANK BIT	1	
631	955-994	CORE BIT 25MM	1	
632	955-995	CORE BIT 29MM	1	
633	955-996	CORE BIT 32MM	1	INCLUD.651
634	955-998	CORE BIT 35MM	1	INCLUD.652
635	956-000	CORE BIT 38MM	1	INCLUD.653
636	955-154	CORE BIT 45MM	1	INCLUD.654
637	959-706	CORE BIT 50MM	1	INCLUD.655
638	955-155	CORE BIT 54MM	1	INCLUD.656
639	959-707	CORE BIT 60MM	1	INCLUD.657
640	956-002	CORE BIT 64MM	1	INCLUD.658
641	959-708	CORE BIT 70MM	1	INCLUD.659

* : ALTERNATIVE PARTS

OPTIONAL ACCESSORIES

DH 50MB

ITEM No.	CODE NO.	DESCRIPTION	NO. USED	REMARKS
642	959-709	CORE BIT 75MM	1	INCLUD.660
643	955-157	CORE BIT 79MM	1	INCLUD.661
644	956-004	CORE BIT 94MM	1	INCLUD.662
645	959-710	CORE BIT 100MM	1	INCLUD.663
646	955-159	CORE BIT 105MM	1	INCLUD.664
647	956-006	CORE BIT 120MM	1	INCLUD.665
648	956-728	CORE BIT 150MM	1	INCLUD.666
649	318-531	GUIDE PLATE (FOR CORE BIT 25MM)	1	
650	318-532	GUIDE PLATE (FOR CORE BIT 29MM)	1	
651	955-997	GUIDE PLATE (FOR CORE BIT 32MM)	1	
652	955-999	GUIDE PLATE (FOR CORE BIT 35MM)	1	
653	956-001	GUIDE PLATE (FOR CORE BIT 38MM)	1	
654	955-166	GUIDE PLATE (FOR CORE BIT 45MM)	1	
655	950-475	GUIDE PLATE (FOR CORE BIT 50MM)	1	
656	955-167	GUIDE PLATE (FOR CORE BIT 54MM)	1	
657	950-476	GUIDE PLATE (FOR CORE BIT 60MM)	1	
658	956-003	GUIDE PLATE (FOR CORE BIT 64MM)	1	
659	950-477	GUIDE PLATE (FOR CORE BIT 70MM)	1	
660	950-478	GUIDE PLATE (FOR CORE BIT 75MM)	1	
661	955-168	GUIDE PLATE (FOR CORE BIT 79MM)	1	
662	956-005	GUIDE PLATE (FOR CORE BIT 94MM)	1	
663	950-479	GUIDE PLATE (FOR CORE BIT 100MM)	1	
664	955-169	GUIDE PLATE (FOR CORE BIT 105MM)	1	
665	956-007	GUIDE PLATE (FOR CORE BIT 120MM)	1	
666	956-743	GUIDE PLATE (FOR CORE BIT 150MM)	1	
667	318-530	CENTER PIN FOR CORE BIT D25-29	1	
668	956-009	CENTER PIN (B) 147L FOR CORE BIT D32-35	1	
669	955-165	CENTER PIN (A) 133L FOR CORE BIT D38-150	1	
670	313-466	CORE BIT SHANK (B) SDS MAX D25-35	1	
671	313-467	CORE BIT SHANK (A) SDS MAX D38-150	1	
672	950-272	DRILL CHUCK 13VLA	1	INCLUD.673
673	930-515	CHUCK WRENCH 10G	1	
674	313-468	CHUCK ADAPTER (SDS MAX)	1	
675	313-469	CHEMICAL ANCHOR ADAPTER (SDS MAX) 12.7MM	1	
676	313-470	CHEMICAL ANCHOR ADAPTER (SDS MAX) 19MM	1	
677	313-471	BULL POINT (SDS MAX) 280L	1	
678	313-472	BULL POINT (SDS MAX) 400L	1	
679	313-473	COLD CHISEL (SDS MAX) 280MM	1	
680	313-474	COLD CHISEL (SDS MAX) 400MM	1	
681	313-475	CUTTER (SDS MAX) W50X400L	1	
682	313-476	SCOOP (SDS MAX) 400L	1	
683	313-477	BUSHING TOOL (SDS MAX)	1	
684	313-478	RAMMER (SDS MAX) 150MM X 150MM	1	
685	313-479	SHANK (SDS MAX)FOR RAMMER.BUSHING TOOL	1	
686	944-575	SYRINGE	1	
687	318-085	SYRINGE (BELLOWS TYPE)	1	
688	308-471	GREASE FOR HAMMER.HAMMER DRILL (70G)	1	
689	980-927	GREASE FOR HAMMER.HAMMER DRILL (500G)	1	