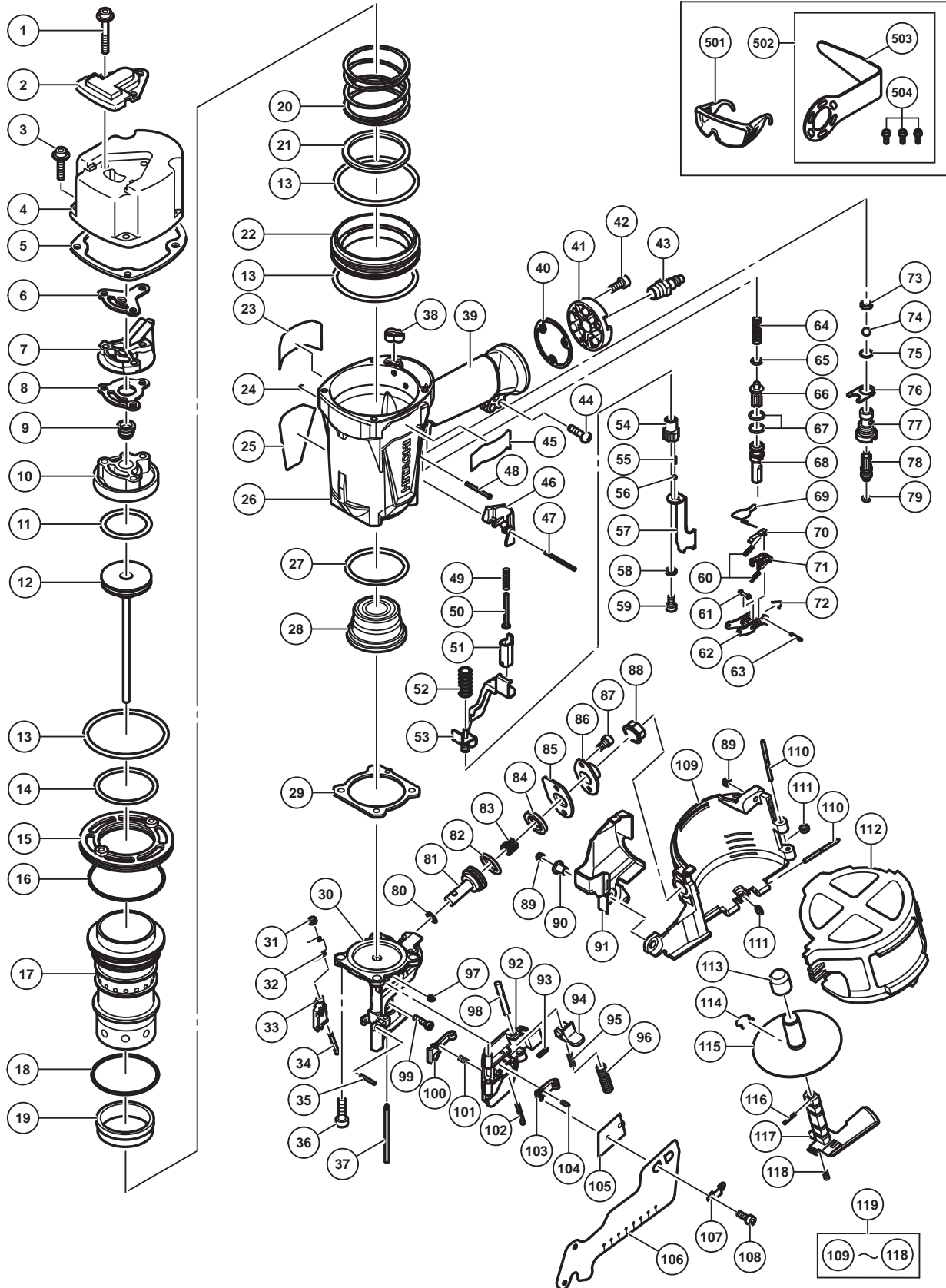


## PNEUMATIC TOOL PARTS LIST

**COIL NAILER**  
**Model NV 83A5**

**2016.11.29**  
**(E1)**



**PARTS**

NV 83A5

ITEM NO.	CODE NO.	DESCRIPTION	NO. USED	REMARKS
1	883509	HEX. SOCKET HD. BOLT (W/FLANGE) M6 X 45	3	
2	877330	TOP COVER	1	
3	883507	HEX. SOCKET HD. BOLT (W/SP.WASHER) M6 X 25	4	
4	877324	EXHAUST COVER	1	
5	877325	GASKET (B)	1	
6	877329	GASKET (F)	1	
7	877328	EXHAUST PIECE	1	
8	877854	GASKET (C)	1	
9	887774	EXHAUST VALVE	1	
10	877852	HEAD CAP AND GASKET SET	1	
11	877368	O-RING (1AP-48)	1	
12	888160	PISTON	1	
13	889112	O-RING	3	
14	877312	CYLINDER O-RING (I.D 63.1)	1	
15	877318	CYLINDER PLATE	1	
16	877313	CYLINDER O-RING (I.D 79.3)	1	
17	889086	CYLINDER	1	
18	877314	CYLINDER O-RING (I.D 69.3)	1	
19	886483	CYLINDER RING	1	
20	877321	CYLINDER SPRING	1	
21	877322	BASE WASHER	1	
22	889087	CYLINDER GUIDE	1	
23	889107	LABEL	1	
24	883405	O-RING (I.D 1.8)	1	
25	889106	WARNING LABEL	1	
26	889116	BODY ASS'Y	1	INCLUD.39
27	877315	CYLINDER O-RING (I.D 63.9)	1	
28	883511	PISTON BUMPER (B)	1	
29	877334	GASKET (A)	1	
30	888153	NOSE	1	
31	877826	FEEDER SHAFT RING	1	
32	877851	FEEDER SPRING	1	
33	888154	FEEDER	1	
34	877825	FEEDER SHAFT	1	
35	888162	ROLL PIN D4 X 20	1	
36	883492	NYLOCK HEX. SOCKET HD. BOLT M8 X 22	4	
37	887847	NAIL GUIDE SHAFT	1	
38	877327	GASKET (G)	1	
39		GRIP RUBBER	1	SUPPLIED WITH ITEM NO.601,602
40	889080	GASKET (H)	1	
41	889079	CAP (B)	1	
42	949658	HEX. SOCKET HD. BOLT M5 X 18 (10 PCS.)	3	
43	887863	AIR PLUG NPT 3/8	1	
44	949243	MACHINE SCREW M5 X 25 (10 PCS.)	1	
45		NAME PLATE	1	
46	889100	VALVE GUARD	1	
47	887852	ROLL PIN D3 X 45	1	
48	889096	TRIGGER PIN	1	
49	889103	PLUNGER (B) SPRING	1	
50	889102	PLUNGER (B)	1	

## PARTS

NV 83A5

ITEM NO.	CODE NO.	DESCRIPTION	NO. USED	REMARKS
51	889099	PUSHING LEVER (C)	1	
52	884067	SPRING	1	
53	889127	PUSHING LEVER (B)	1	
54	326799	ADJUSTER	1	
55	880175	ADJUSTER SPRING	2	
56	959148	STEEL BALL D3.175 (10 PCS.)	2	
57	888155	PUSHING LEVER (A)	1	
58	880081	WASHER	1	
59	888792	HEX. SOCKET HD. BOLT M6 X 12	1	
60	889094	TRIGGER ARM SPRING	2	
61	889093	CHANGE ROD	1	
62	889091	TRIGGER	1	
63	887856	ROLL PIN D2.5	1	
64	886725	PLUNGER SPRING	1	
65	874436	O-RING (P-4)	1	
66	884113	PLUNGER (A)	1	
67	884112	O-RING (I.D 10.7)	2	
68	889088	VALVE BUSHING (A)	1	
69	889089	TRIGGER SPRING	1	
70	889092	TRIGGER ARM	1	
71	889095	CHANGE STOPPER	1	
72	889081	LOCK PIN	1	
73	888151	VALVE PACKING	1	
74	875645	URETHANE BALL (C) D7.14	1	
75	875638	O-RING (S-12)	1	
76	889110	VALVE PLATE	1	
77	889225	TRIGGER VALVE BUSHING	1	
78	889098	TRIGGER PLUNGER	1	
79	887840	O-RING	1	
80	872645	O-RING (P-9)	1	
81	887849	FEED PISTON	1	
82	876796	O-RING (P-22)	1	
83	877144	FEED SPRING	1	
84	877711	BUMPER	1	
85	877827	FEED PISTON COVER (A)	1	
86	877713	FEED PISTON COVER	1	
87	888169	NYLOCK BOLT M5 X 10	2	
88	878305	MAGAZINE BUSHING	1	
89	877371	NYLON NUT M5	2	
90	882907	SLEEVE	1	
91	888157	GUARD	1	
92	887844	NAIL GUIDE	1	
93	887458	ROLL PIN D3 X 10 (10 PCS.)	1	
94	326774	GUIDE LOCK (A)	1	
95	877372	SPRING	1	
96	878425	SPRING	1	
97	880319	SHAFT RING	1	
98	877820	LOCK SHAFT	1	
99	949757	HEX. SOCKET HD. BOLT M5 X 20 (10 PCS.)	1	
100	878401	SUB NAIL STOPPER	1	

**PARTS**

NV 83A5

ITEM NO.	CODE NO.	DESCRIPTION	NO. USED	REMARKS
101	877468	SUB STOPPER SPRING	1	
102	887846	ROLL PIN D3 X 28	1	
103	887845	MAIN NAIL STOPPER (N)	1	
104	876681	MAIN STOPPER SPRING	1	
105	877469	NAIL GUIDE COVER	1	
106	888161	COVER	1	
107	884022	PLATE	1	
108	878614	NYLOCK HEX. SOCKET HD. BOLT M4 X 8	2	
109	887855	MAGAZINE	1	
110	883111	PIN	2	
111	877826	FEEDER SHAFT RING	2	
112	884034	MAGAZINE COVER	1	
113	884038	HOLDER CAP	1	
114	884037	RATCHET SPRING	1	
115	888107	NAIL HOLDER (A)	1	
116	887856	ROLL PIN D2.5	1	
117	884079	HOLDER SHAFT	1	
118	881826	SPRING	1	
119	887853	MAGAZINE ASS'Y	1	INCLUD.109-118

**STANDARD ACCESSORIES**

ITEM NO.	CODE NO.	DESCRIPTION	NO. USED	REMARKS
501	875769	SAFETY GLASSES	1	
502	889661M	HOOK ASS'Y	1	INCLUD.503,504
503		HOOK	1	
504	306017	HEX. SOCKET HD. BOLT (W/FLANGE) M5 X 14	3	

**OPTIONAL ACCESSORIES**

ITEM NO.	CODE NO.	DESCRIPTION	NO. USED	REMARKS
601	881768	GRIP TAPE (A)	1	
602	888213	TAPE (2 PCS.)	2	