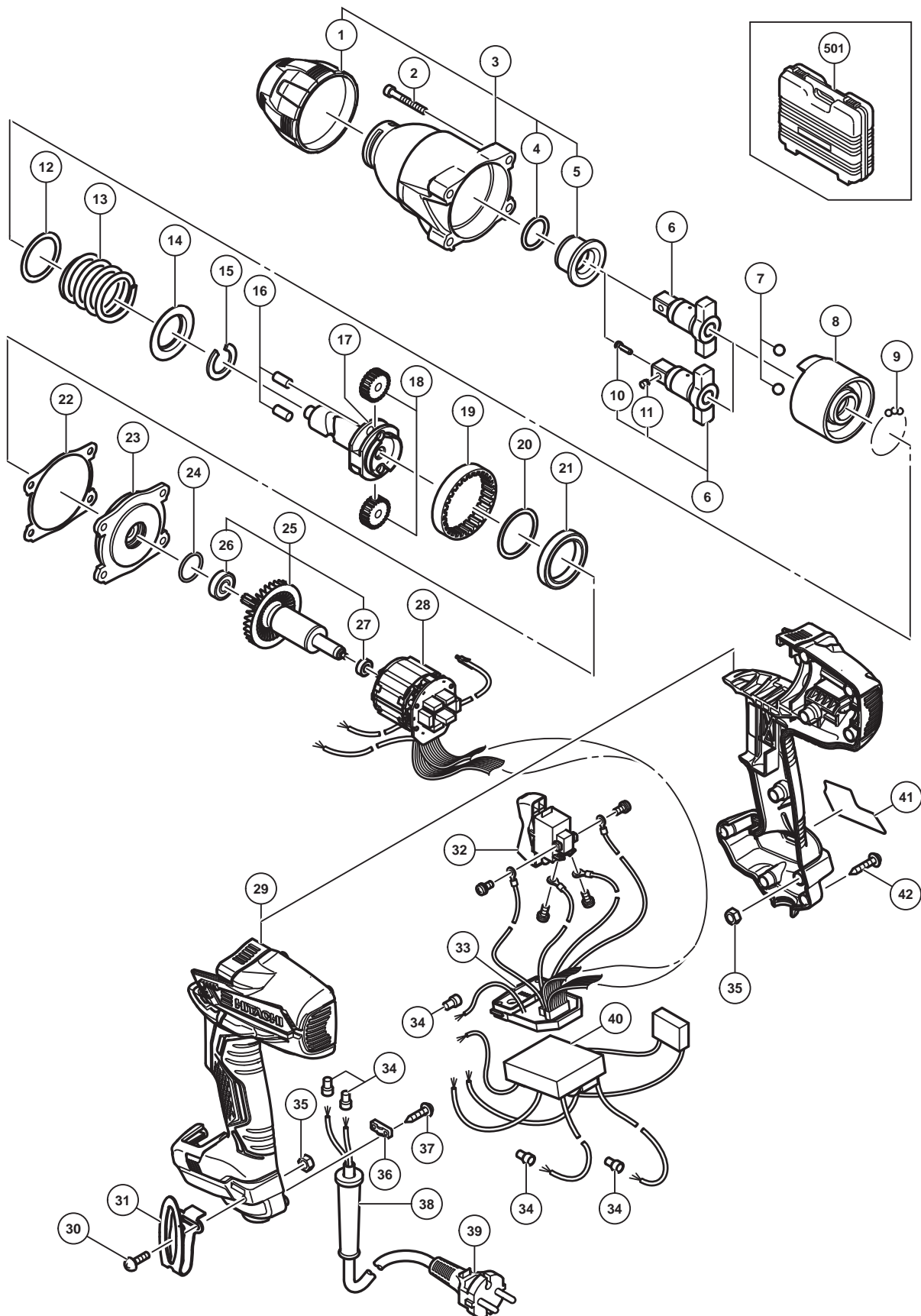


## ELECTRIC TOOL PARTS LIST

■ **IMPACT WRENCH**  
**Model WR 16SE**

**2014-9-10**  
**(E1)**



**PARTS**

WR 16SE

ITEM NO.	CODE NO.	DESCRIPTION	NO. USED	REMARKS
1	337721	BUMPER (A)	1	
2	323753	SEAL LOCK HEX. SOCKET HD. BOLT M5 X 35	4	
3	337195	HAMMER CASE ASS'Y	1	INCLUD.1,4,5
4	318704	O-RING (M)	1	
5	323766	METAL	1	
*	6	334341	1	ANVIL (L) TYPE FOR W/O PLUNGER(A),PIN RETAINER(A)
*	6	334342	1	ANVIL (L) ASS'Y INCLUD.10,11 TYPE FOR W/PLUNGER (A), PIN RETAINER (A)
7	959150	STEEL BALL D6.35 (10 PCS.)	2	
8	337197	HAMMER (A)	1	
9	959155	STEEL BALL D3.97 (10 PCS.)	29	
*	10	323542	1	PIN RETAINER (A) FOR FRA,FRG,ESP,ITA,RUS,USA,CAN
*	11	323541	1	PLUNGER (A) FOR FRA,FRG,ESP,ITA,RUS,USA,CAN
12	317525	WASHER (B)	1	
13	337198	HAMMER SPRING (A)	1	
14	317521	WASHER (A)	1	
15	337201	STOPPER (A)	1	
16	985169	NEEDLE ROLLER	2	
17	337196	SPINDLE (A)	1	
18	323785	IDLE GEAR SET (2 PCS.)	2	
19	323786	RING GEAR	1	
20	337199	WASHER (C)	1	
21	337733	BALL BEARING 6807	1	
22	337698	PACKING (A)	1	
23	337200	INNER COVER (A)	1	
24	887302	O-RING (I.D 21.5)	1	
25	337203	ROTOR ASS'Y	1	INCLUD.26,27
26	608DDM	BALL BEARING 608DDC2PS2L	1	
27	333784	BALL BEARING 624DD	1	
*	28	340881	1	STATOR IGBT PCB 100V-120V
*	28	340882	1	STATOR IGBT PCB 220V-240V
29	337734	HOUSING (A).(B) SET	1	
30	327001	TRUSS HD. SCREW M4 (BLACK)	1	
31	335724	HOOK	1	
32	337202	SWITCH	1	
*	33	337700	1	CONTROLLER (A) 110V
*	33	337701	1	CONTROLLER (A) 120V
*	33	337702	1	CONTROLLER (A) 220V-230V
*	33	337703	1	CONTROLLER (A) 240V
34	959140	CONNECTOR 50091 (10 PCS.)	5	
35	327002	LOCK NUT M4 (BLACK)	2	
36	937631	CORD CLIP	1	
37	984750	TAPPING SCREW (W/FLANGE) D4 X 16	2	
*	38	953327	1	CORD ARMOR D8.8
*	38	938051	1	CORD ARMOR D10.1
*	39	500247Z	1	CORD (CORD ARMOR D8.8)
*	39	500439Z	1	CORD (CORD ARMOR D8.8) FOR AUS,NZL
*	39	500240Z	1	CORD (CORD ARMOR D8.8) FOR USA,CAN
*	39	500450Z	1	CORD (CORD ARMOR D8.8) FOR GBR (230V)
*	39	500461Z	1	CORD (CORD ARMOR D8.8) FOR GBR (110V)



